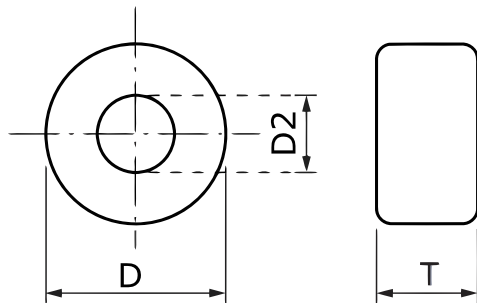


**KEMET Part Number: ESD-R-15C**  
(UECESDR15C0000)

EMI Cores, Commercial Grade, ESD-R



Dimensions	
D	15.2mm MAX
D2	10.5mm MAX
T	12.5mm MAX

General Information	
Style:	Round
Brand:	NEC-Tokin
Series:	ESD-R
Cable Type:	Round Cable
Description:	EMI Core Solid, For Round Cables, Toroidal Cores, Coated Type
RoHS:	Yes
Case Color:	Blue
Toroidal:	ESD-R-15C-1
Materials:	Mn-Zn & Ni-Zn

Specifications	
Effective Frequency:	300 MHz (FM Band Range)