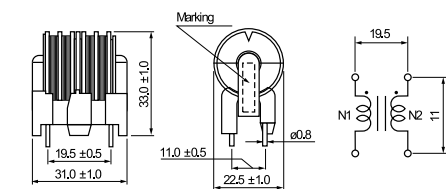
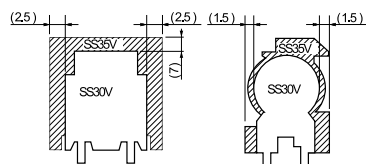


**KEMET Part Number: SS30V-R250092**  
(UAL30VR2500920)

Commercial Grade, SS30V, 9200 uH



Size Comparison with SS35V Type



**Dimensions**

<b>L</b>	31mm +/-1mm
<b>T</b>	22.5mm +/-1mm
<b>H</b>	33mm +/-1mm
<b>S</b>	11mm +/-0.5mm
<b>S1</b>	19.5mm +/-0.5mm
<b>F</b>	0.8mm NOM

**General Information**

<b>Style:</b>	Through-Hole Choke
<b>Series:</b>	SS30V
<b>Description:</b>	Common Mode Filter (Class B)
<b>RoHS:</b>	Yes
<b>Miscellaneous:</b>	Inductance Measurement Condition: 1kHz 1V KC530
<b>Notes:</b>	Replacement For SS35V Type And SS28V Type. Replacement For SS35V Type And SS28V Type

**Specifications**

<b>Inductance:</b>	9200 uH
<b>Rated Temperature:</b>	120C
<b>Current:</b>	2.5 Amps
<b>Voltage AC:</b>	250 VAC
<b>DC Resistance:</b>	160 mOhms
<b>Insulation Resistance:</b>	100 MOhms

**Packaging Specifications**

<b>Weight:</b>	34.1 g
----------------	--------