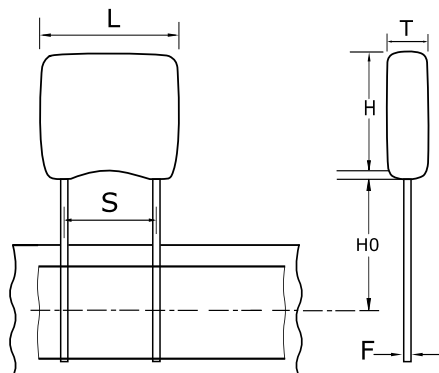


Ceramic, GoldMax, 0.22 uF, 5%, 25 V, X8R, GoldMax, Automotive Grade, Lead Spacing = 5.08mm



General Information

| | |
|---------------|---------------------------|
| Style: | Radial |
| Series: | GoldMax |
| Description: | GoldMax, Automotive Grade |
| Features: | Automotive Grade |
| RoHS: | Yes |
| Termination: | Tin |
| Failure Rate: | N/A |
| Approvals: | AEC-Q200 |
| AEC-Q200: | Yes |
| Halogen Free: | Yes |

Dimensions

| | |
|----|----------------------|
| L | 7.11mm MAX |
| H | 9.14mm MAX |
| T | 4.07mm MAX |
| S | 5.08mm +/-0.78mm |
| H0 | 16mm +/-0.5mm |
| F | 0.51mm +0.1/-0.025mm |

Packaging Specifications

| | |
|---------------------|------------|
| Packaging: | T&R, 305mm |
| Packaging Quantity: | 1500 |

Specifications

| | |
|----------------------------------|---------------------|
| Capacitance: | 0.22 uF |
| Capacitance Tolerance: | 5% |
| Voltage DC: | 25 VDC |
| Dielectric Withstanding Voltage: | 62.5 V |
| Temperature Range: | -55/+150C |
| Temperature Coefficient: | X8R |
| Dissipation Factor: | 2.5% 25C |
| Aging Rate: | 0% Loss/Decade Hour |
| Insulation Resistance: | 4.55 GOhms |