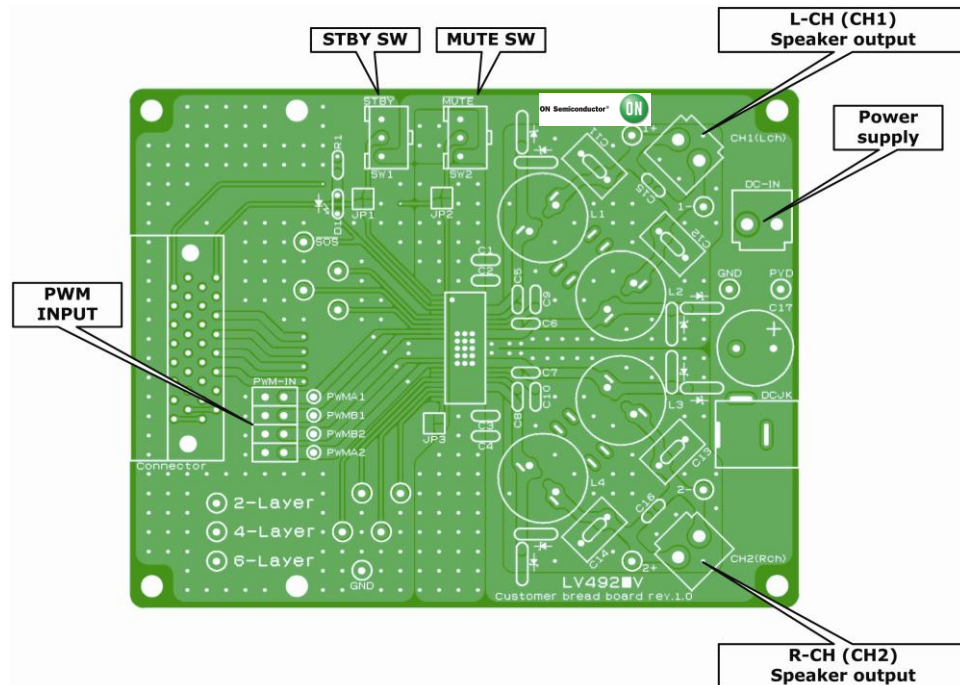


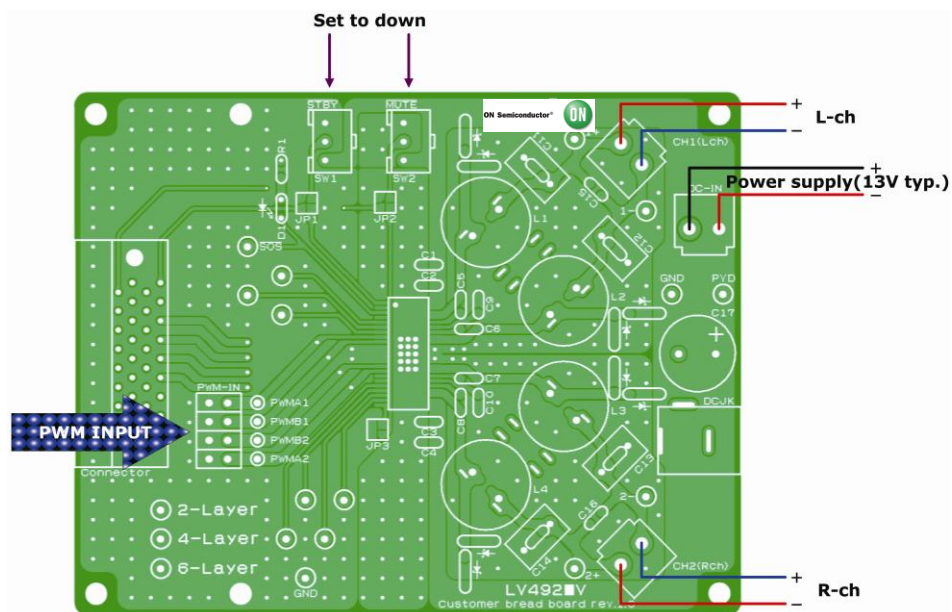
## Test Procedure for the LV4924VHGEVB Evaluation Board

## View



## Set-up

1. Connect power supply (13V dc) to the terminal.
2. Connect speakers (8Ω) to the terminals.
3. Connect PWM input to the terminals.





## Test

1. Turn on 13V dc power supply.
2. STBY\_SW set to up-side (STBY: Off).
3. MUTE\_SW set to up-side (MUTE: Off).
4. Turn on PWM input.

## Shut Down

1. MUTE\_SW set to down-side (MUTE: On).
2. STBY\_SW set to down-side (STBY: On).
3. Turn off 13V dc power supply.

**Caution:** STBY\_SW must be set to down-side after MUTE\_SW.