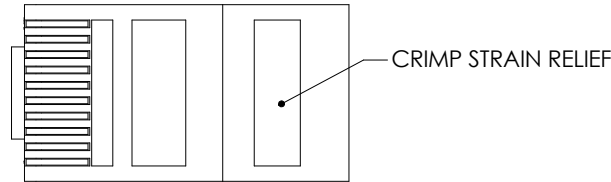
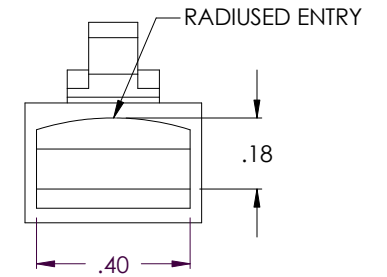
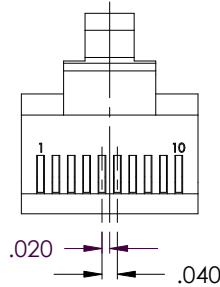
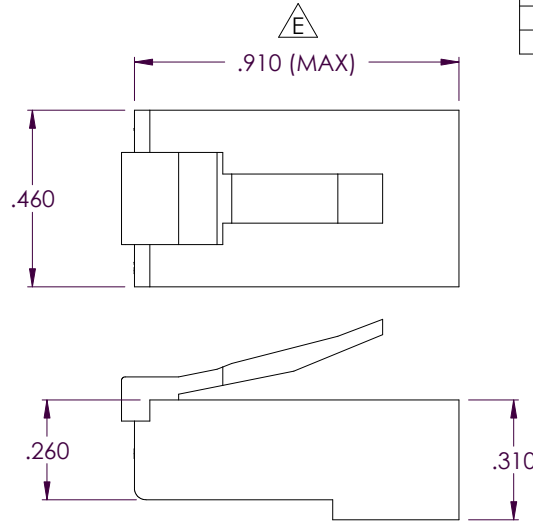
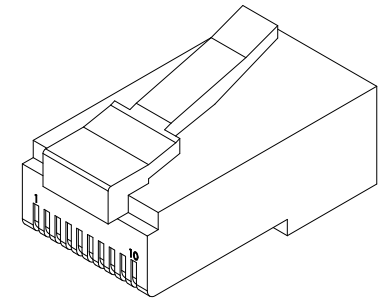


THE INFORMATION CONTAINED IN THIS DRAWING IS THE SOLE PROPERTY OF L-COM, INC. ANY REPRODUCTION IN PART OR WHOLE WITHOUT THE WRITTEN PERMISSION OF L-COM, INC. IS PROHIBITED.

REVISIONS			
REV	DESCRIPTION	DATE	APPROVED
B	ECN1530: UPDATE NOTES	10/1/03	D. PARHAM
C	ECN1618: ADDED COMPONENT SPECIFICATION TABLE	12/22/03	D. PARHAM
D	ECN#2230: ADDED REFERENCE DOCUMENTATION LINKS	10/12/05	D. PARHAM
E	ECN#2301: CHANGE DIMENSIONS FOR LOOSER TOLERANCE	01/26/06	D. PARHAM



\*CONTACTS SHOWN CRIMPED



Component Specification	
<b>Material</b>	
Housing	UL94V-0 compliant polycarbonate Shall conform to FCC 68.5 Subpart F
Contacts	Copper Alloy
Contact Plating	15 microns Gold
<b>Design</b>	
Interface (Mechanical)	Shall conform to FCC 68.5 subpart F
<b>Electrical</b>	
Current Rating	2A (max)
Voltage Rating	250 VAC (max)
Insulation Resistance	500 MΩ (min)
<b>Mechanical</b>	
Conductor acceptance	24 to 26 AWG
Maximum Conductor OD	.038"
Conductor Type	Stranded or Solid
Contact Style	Two prong
<b>Environmental</b>	
Operating Temperature Range	-40°C to +125°C

CS-178

REFERENCE THE FOLLOWING DOCUMENTS:

[TERMINATION INSTRUCTIONS LTI-014 \(ROUND CABLE\)](#)

[TERMINATION INSTRUCTIONS LTI-017 \(FLAT CABLE\)](#)

[TOOLING INFORMATION LCT-002](#)

[LCT-003 \(PROPRIETARY\)](#)

UNLESS OTHERWISE SPECIFIED,  
DIMENSIONS ARE IN INCHES  
TOLERANCES ARE:  
X ±.1  
XX ±.05  
XXX ±.005  
CABLE LENGTH TOLERANCE  
<300" ±5% >300" ±2%

APPROVALS	DATE
DRAWN BY D. PARHAM	3/29/2002
CHECKED BY T. CLARK	3/29/2002
APPROVED BY C. McCORMICK	3/29/2002

CONFIGURATION DETAILS OF  
UNDIMENSIONED FEATURES  
MAY VARY

<b>L-com</b> CONNECTIVITY PRODUCTS		45 BEECHWOOD DRIVE NORTH ANDOVER, MA 01845	
PRODUCT DESCRIPTION PLUG, RJ45(10X10)ROUND CABLE			
DRAWING TITLE OUTLINE DRAWING			
SIZE <b>A</b>	FSCM NO. <b>43321</b>	DWG. NO. TDR10P10C-OD1	REV. <b>E</b>
SCALE: NONE		CAD FILE: TDR10P10C-OD1.SLDDRW	SHEET 1 OF 1